



WDFW CITIZEN SCIENCE UPDATE

For Chehalis Partnership

Washington Department of Fish and Wildlife
Citizen Science and Watchable Wildlife
Partnerships

April 2017 | Wendy Connally

WDFW Citizen Science

Credible, relevant, defensible
to inform conservation action

Partnering with Purpose

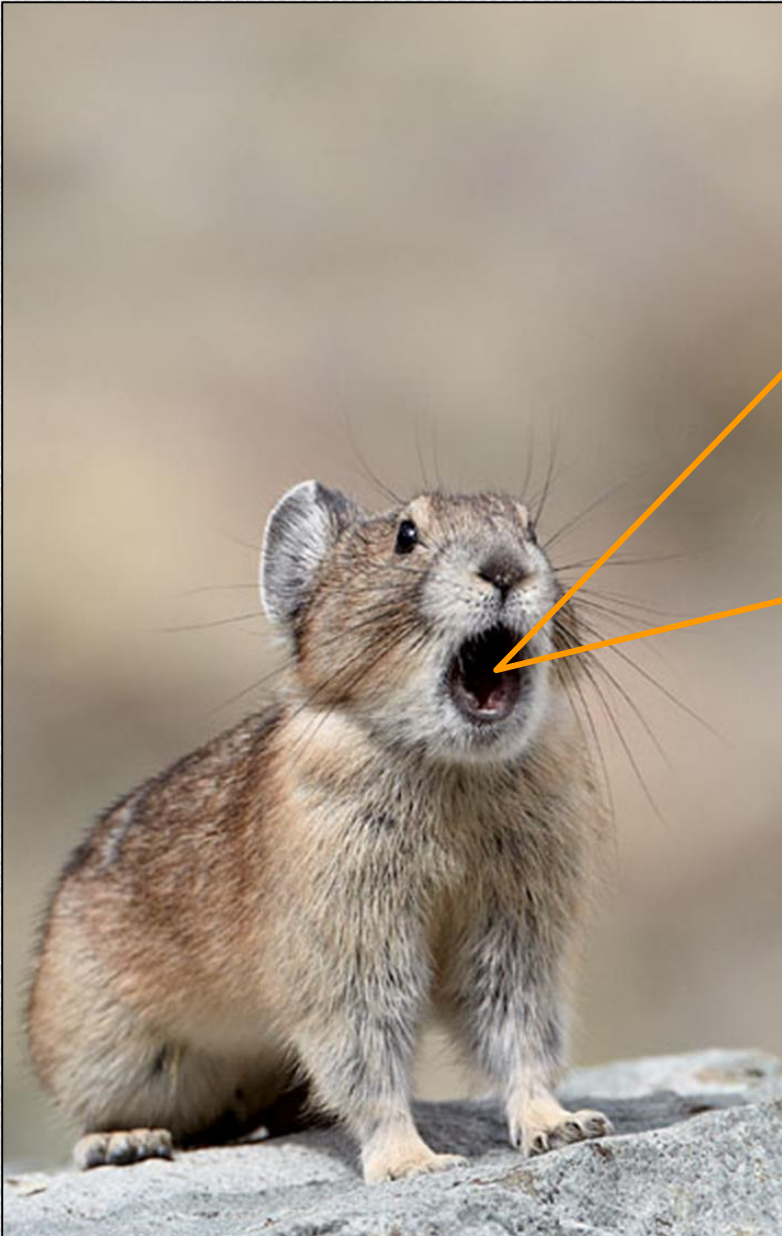
Communication +
Community: conservation
does not happen without
people

Participation = shared
understanding

Wildlife recreation and under-
served non-traditional
constituencies

Fiscally sound

Sense of Place



2015-2020 State Wildlife Action Plan

Species and Habitats of Greatest Conservation Need

Capacity

268 SGCN, 17 HGCN

Resources

Knowledge we don't have

Mission

Constituents


Engagement

Emerging Issues

IMPLEMENTATION



<http://wdfw.wa.gov/conservation/cwcs/>

A stylized, light blue illustration of a plant with several leaves and small, round seed pods or fruits, positioned on the left side of the slide.

WDFW Citizen Science PROJECT TYPES, TOOLS, AND EXAMPLES



Not project-specific
Vetted Data Management
Tools support user
experience/community
+ WDFW “Best Practices” Training

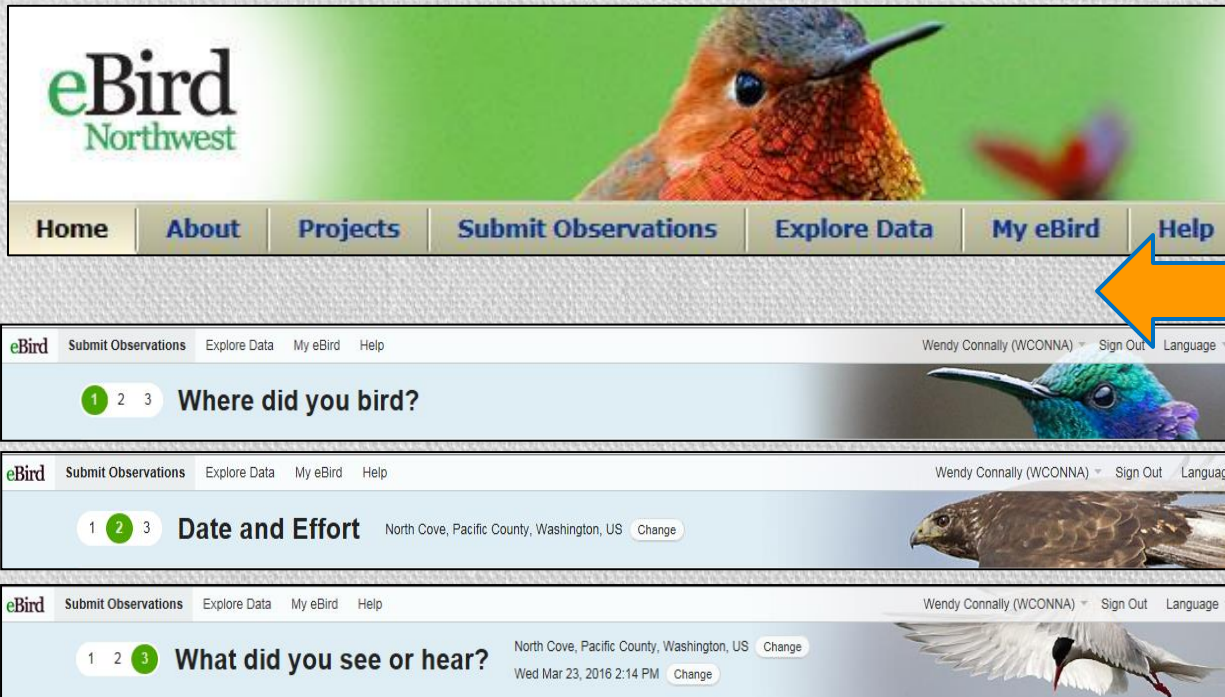
CROWD-SOURCED



- Portal within eBird (Cornell)
- Partners with Purpose
- Support our NW birding community
- Engage regional birders in local and regional bird and bird habitat conservation



<http://ebird.org/content/nw/about/>



Browser and App

Best Practices Training

Content and “Calls to Action”

Assistance to set up point counts or transects for survey and monitoring – citizen science

Technical guidance on specific projects that target WDFW questions, research needs, status updates

iNaturalist
(crowd)

Best Practices
and Project Set
Up Training

For land trusts
and other
conservation
partners to run
their own
projects



- Observer/Curator relationship
- Create Community and tap into sense of place
- Privacy options
- Map interface/accuracy

A photograph of a tree frog with green and brown mottled skin, perched on a light-colored surface.



WDFW Online Wildlife Reporting

Improvements since last year, new coming
Targeted for certain crowd-sourced projects:
Moose, Bats (WNS), Elk (Hoof Disease), Non-
natives, and SGCN (“other wildlife”)

<http://wdfw.wa.gov/viewing/observations/>



Shared Priorities

PARTNER-DRIVEN OR PARTNER- SUPPORTED

Woodland Park Zoo Amphibian Monitoring



Project, Protocol, Training
More than 40 trained
+/-16 Team leads submitting observations
3 WDFW Biologists/Project Leads as
Curators
96 Observations as of 2017 April 17



iNaturalist Project

- Target audience and geography
- Custom terms, rules, invitations, and “form” IF desired
- Project-specific fields – tie to your desired data use
- **Best with Training**

Fields for Amphibians of Washington (Pilot 2017)	
Did you follow decontamination protocols?	<div>Yes</div> <div>To protect sensitive animals and habitats - remember no egg or animal handling, too</div>
Survey with Permission?	<div>yes</div> <div>Select YES only if you got permission for access to this site or if you are the landowner</div>
Observation Weather	<div>clear, no clouds</div> <div>Weather when you observed this species</div>
Wind Up to Beaufort 4	<div>0 - calm water like a mirror,</div> <div>For best survey conditions, only observations with Beaufort <4</div>
Water Body Human Modified	<div>Yes</div> <div>If water body is human-made stormwater detention pond, retained by human-made dam or or other barrier of some kind, modified by rip-rap or shoreline armoring, select YES and add notes/comments.</div>
Habitat Type Code	<div>1 (water <1ft)</div> <div>This is the habitat where you are making the observation - fine scale</div>
Egg Mass(es)	<div></div> <div>Count to the best of your ability - if in doubt, estimate to the nearest "10"</div>
# Tadpoles	<div>0</div> <div>Number of tadpoles of this species on this survey</div>
# Juveniles	<div>0</div> <div>Number of juveniles of this species on this survey</div>
# Adults	<div>0</div> <div>Number of adults of this species on this survey</div>
# Dead/Sick	<div></div> <div>Count to the best of your ability. Do not count DEAD in other life stage tallies. If DEAD/SICK noted, add description in Notes/Comment</div>
Notes and Comments	<div></div>

Audubon's Sagebrush Songbirds



Over the last 3 seasons > 2,000 obs of 170+ sp.

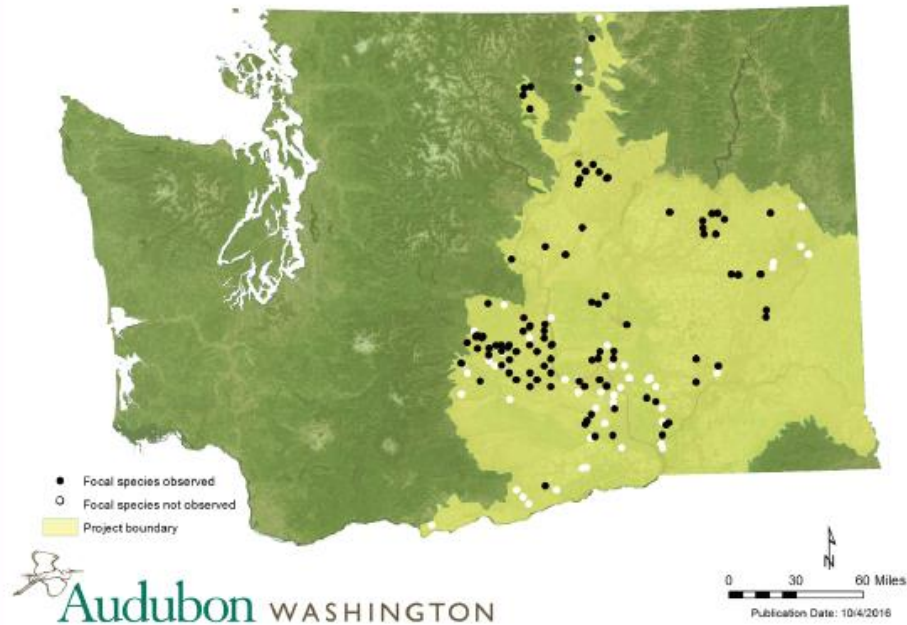
Sampling design, private lands, volunteer data entry, quality control

TOP 10 SPECIES OBSERVED DURING SAGEBRUSH SONGBIRD SURVEY*

1. Western Meadowlark
2. Horned Lark
3. Vesper Sparrow
4. Brewer's Sparrow†
5. Common Raven
6. California Quail
7. Sagebrush Sparrow†
8. Red-winged Blackbird
9. Mourning Dove
10. Sage Thrasher**

* Stationary point count (2014–2016)

† Focal study species



**Location of Sagebrush Songbird survey sites with one or more focal species observed
(Brewer's Sparrow, Sagebrush Sparrow, or Sage Thrasher)**

By the Numbers: 2016 Community Science Stats

Number of Sites Surveyed	Number of Surveys Completed	Number of Volunteers	Actual Hours of Survey Time	Total Hours of Volunteer Time
58	173	117	1,073	2,343
Number of Species Observed (2014–2016)		Number of Survey Sites with Focal Study Species Observed		
200 Species		97 out of 146 Sites		



Species Lead, Biologists or
Division/Program Priorities

WDFW-DRIVEN

WDFW Biologists Workplans

Eastern Washington
Butterflies with
Washington Butterfly
Association

Washington
Groundsquirrel
Rangewide Surveys

Western Gray
Squirrel Rangewide
Surveys (Year 3)



Other Projects in the Works ... +

Bat Roost Surveys

Loon observations

Post-wildfire Point
Counts

Shrub steppe
wetlands

Multi-state SEOW
surveys

Bumble Bee
Watch



Questions?



Wendy Connally wendy.connally@dfw.wa.gov