

Chehalis Basin Strategy Programmatic Environmental Impact Statement (EIS)

Chehalis Basin Partnership

Chrissy Bailey, Department of Ecology

February 19, 2016



A New Course

- Limited, single-purpose actions since 1933

- 2011 and 2012 – Local/State Partnership



- Governor's Work Group recommended multi-benefit approach
- Programmatic EIS

Programmatic EIS

Purpose and Need



The Chehalis Basin suffers from both flooding and degradation of aquatic species. The Chehalis Basin Strategy will provide a long-term, integrated approach to substantially reduce damages from major floods and restore degraded aquatic species habitat in the Basin.

Objectives

- Reduce specific conditions caused by a major flood event
- Protect and restore aquatic species habitat function



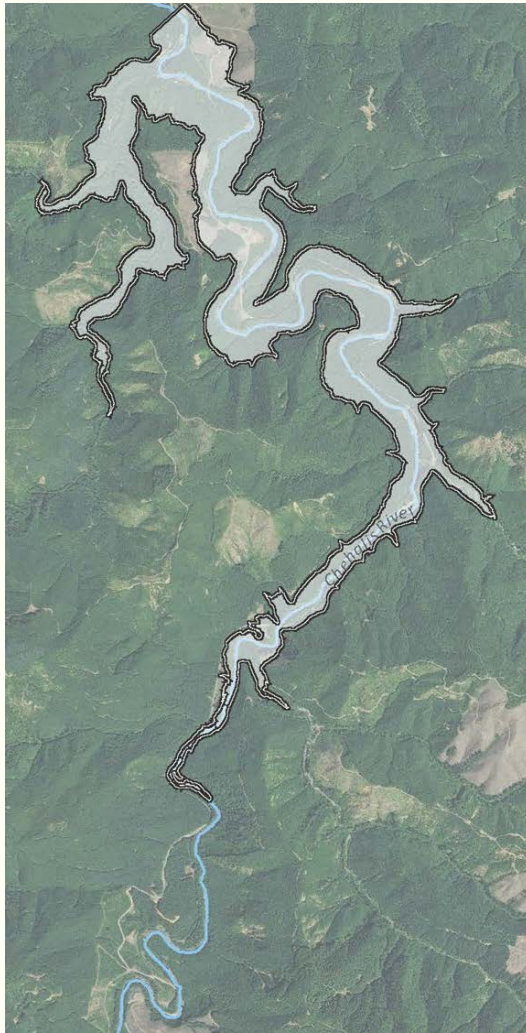
Action Elements & Alternatives

ELEMENT	DRAFT ALTERNATIVES				
	ALTERNATIVE 1: GOVERNOR'S WORK GROUP RECOMMENDATION	ALTERNATIVE 2: GOVERNOR'S WORK GROUP RECOMMENDATION WITHOUT FLOOD RETENTION FACILITY	ALTERNATIVE 3: NONSTRUCTURAL	ALTERNATIVE 4: RESTORATIVE FLOOD PROTECTION AND AQUATIC SPECIES HABITAT RESTORATION	NO ACTION
Flood Damage Reduction					
Large-scale					
Flood Retention Facility	●				
Airport Levees	●	●			
I-5 Projects		●			
Aberdeen/Hoquiam North Shore Levee	●	●			
Restorative Flood Protection				●	
Local-scale					
Flood-proofing	●	●	●	●	
Local Projects	●	●	●	●	○
Land Use Management	●	●	●	●	○
Flood Warning System	●	●	●	●	○
Aquatic Species Habitat Restoration					
Restore Riparian Habitat	●	●	●	●	○
Remove and improve Priority Fish Passage Barriers	●	●	●	●	○
Restore Off-channel Habitat	●	●	●	●	○
Add Wood Structures	●	●	●	●	○
Land Use	●	●	●	●	○

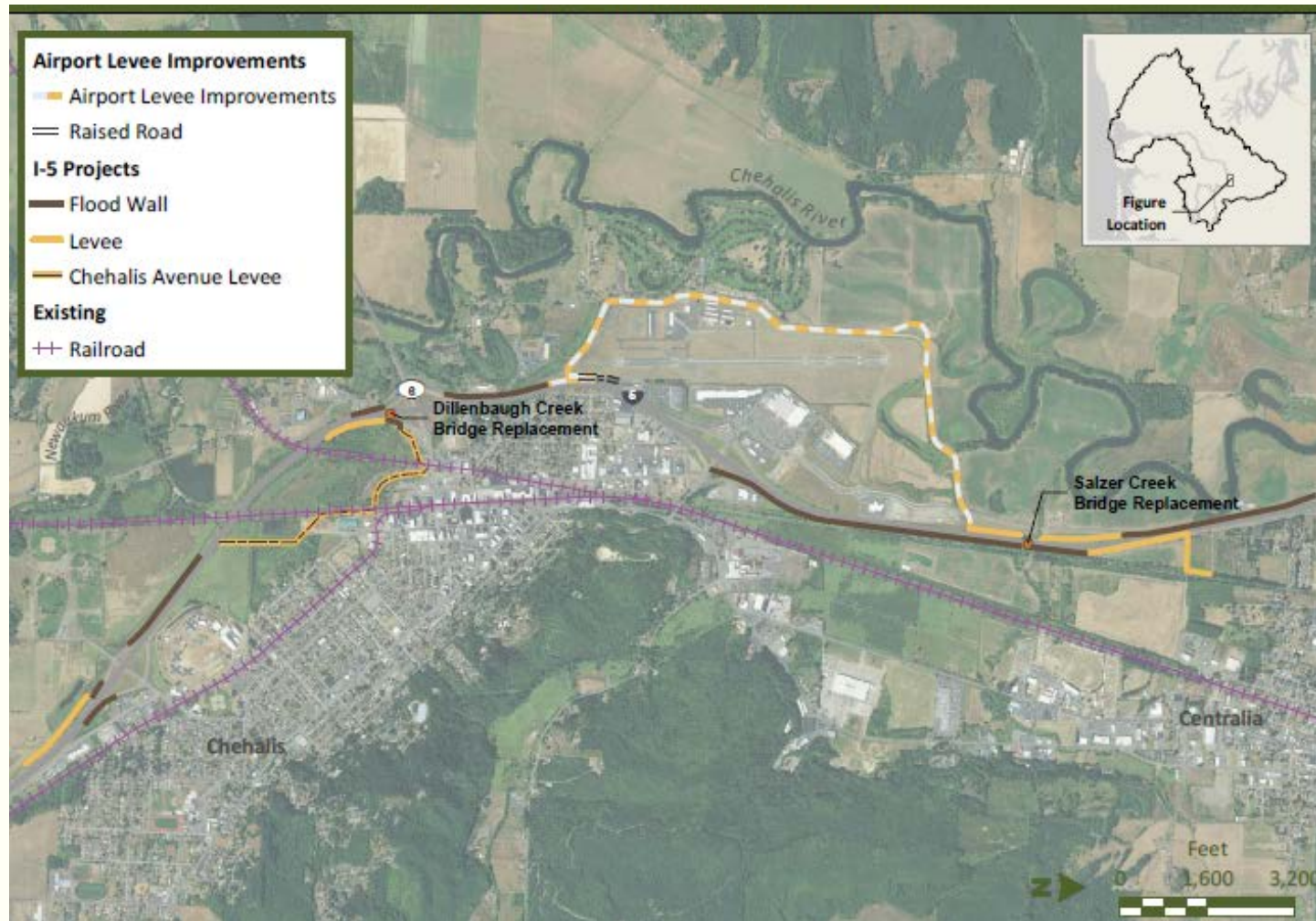
Flood Retention Facility

- Flood Retention Only (FRO)
 - Provides flood retention to reduce flood damages in downstream areas
 - Is operated when flood flows are predicted to exceed a major flood at the Grand Mound gage (38,800 cfs)
- Flood Retention and Flow Augmentation (FRFA)
 - Provides flood retention to provide same downstream reduction in flood damages as FRO
 - Has a permanent pool that is filled in winter, which releases flow in spring/summer/fall to augment instream flows and temperatures in Chehalis River

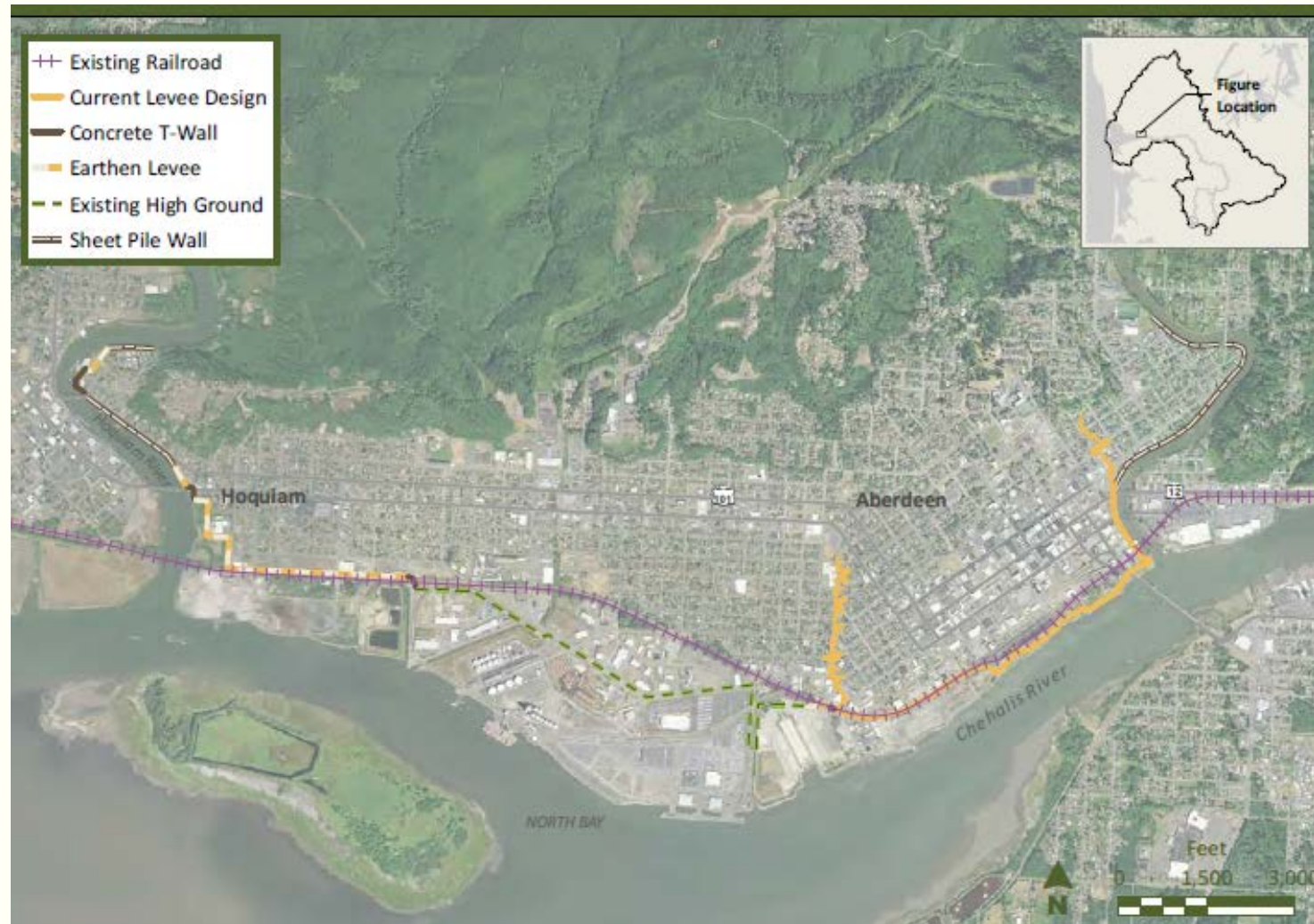
Flood Retention Facility at RM 108



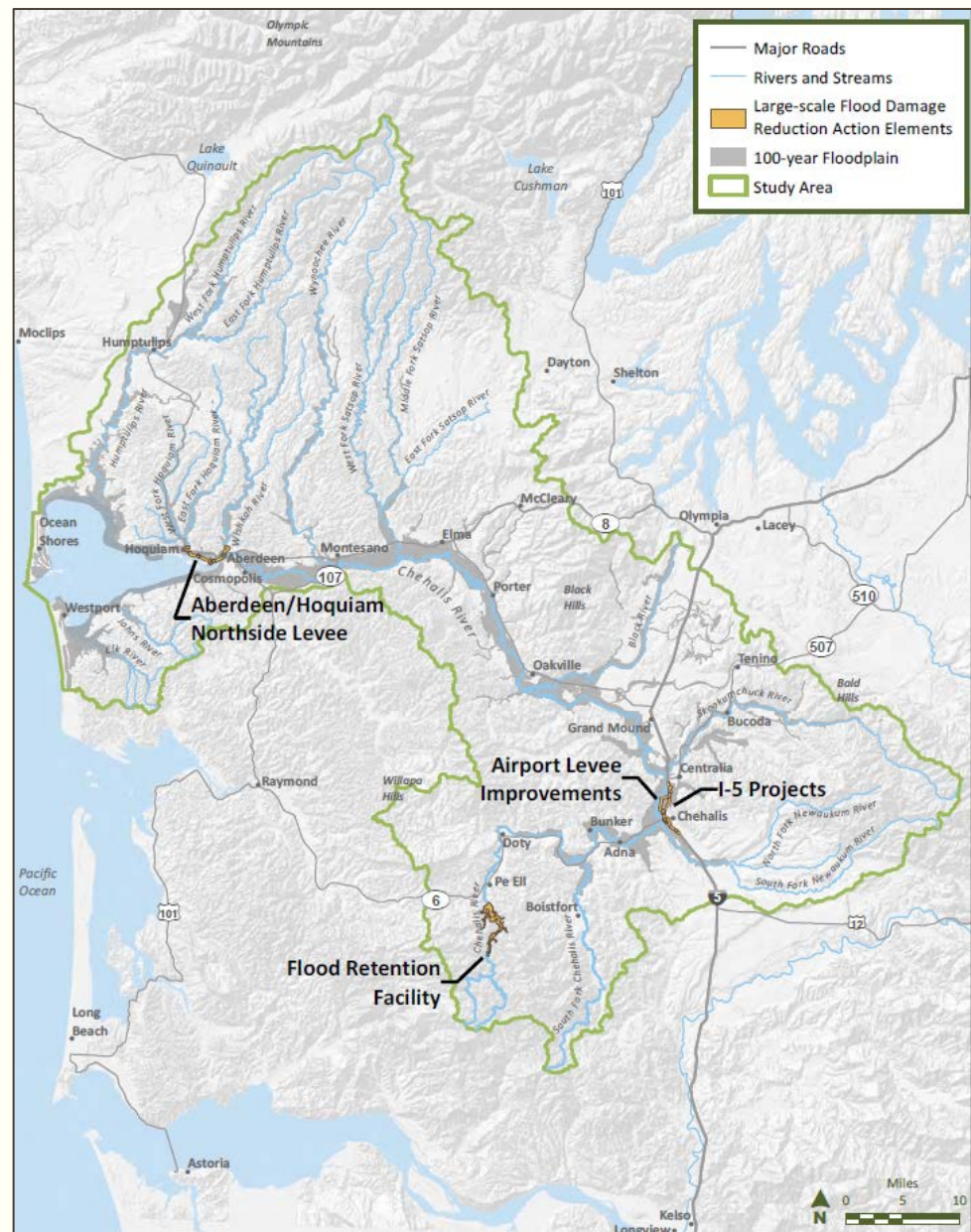
Airport Levee & Interstate 5 projects



Aberdeen/Hoquiam North Shore Levee



Large Scale Flood Damage Reduction



Local Scale Flood Damage Reduction

- Flood-proofing
 - Elevating or building walls to protect structures from flooding
- Local Projects
 - Area-specific projects aimed at protecting key infrastructure and priority areas
- Land use management
- Flood warning System
 - Weather tracking and flooding event notification systems



Example of flood proofed house (French 2014)



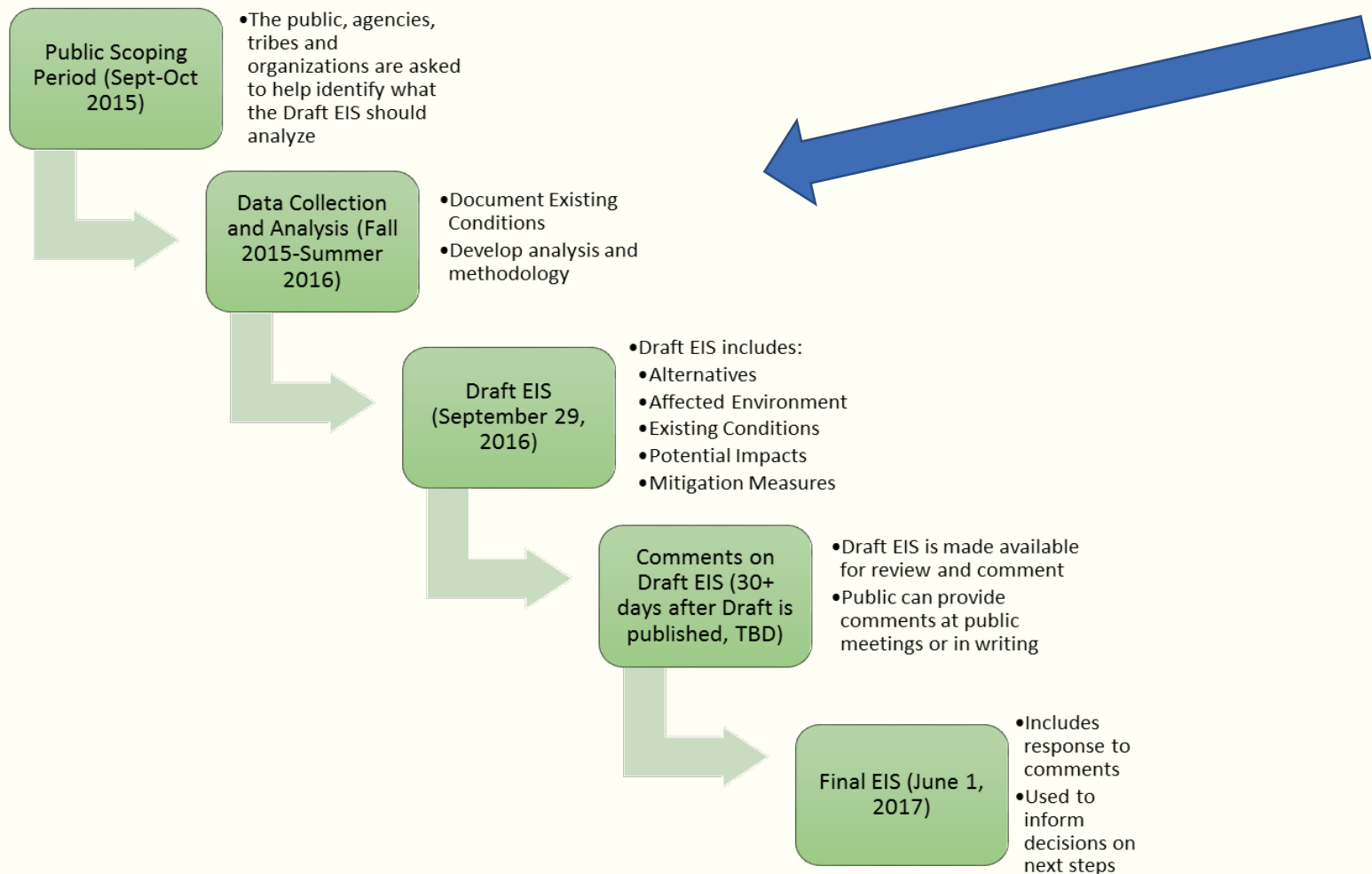
Wastewater Treatment Plant Wynoochee River

Aquatic Species Habitat Restoration

- Restore riparian habitat
- Remove and improve priority fish passage barriers (culverts)
- Restore off-channel habitat
- Add wood structures
- Reduce bank erosion
- Reconnect the floodplain

Next Steps

Preparing the Programmatic EIS



Resources

- Chrissy Bailey, EIS Project Manager – (360) 407-6781 or chrissy.bailey@ecy.wa.gov
- Ecology website:
<http://www.ecy.wa.gov/programs/sea/sepa/chehalisbasin.html>
- Chehalis Basin Strategy website:
<http://chehalisbasinstrategy.com/>

Questions/Discussion

