

The background of the slide is a photograph of a rural landscape. In the foreground, there is a body of water, possibly a lake or a large pond, with some reeds and grasses along the shore. In the middle ground, there is a small building with a red roof and a white silo. The background is filled with trees, some of which are bare, suggesting a late autumn or winter setting. The sky is overcast.

Chehalis Basin Strategy

Public Involvement

Public involvement goals

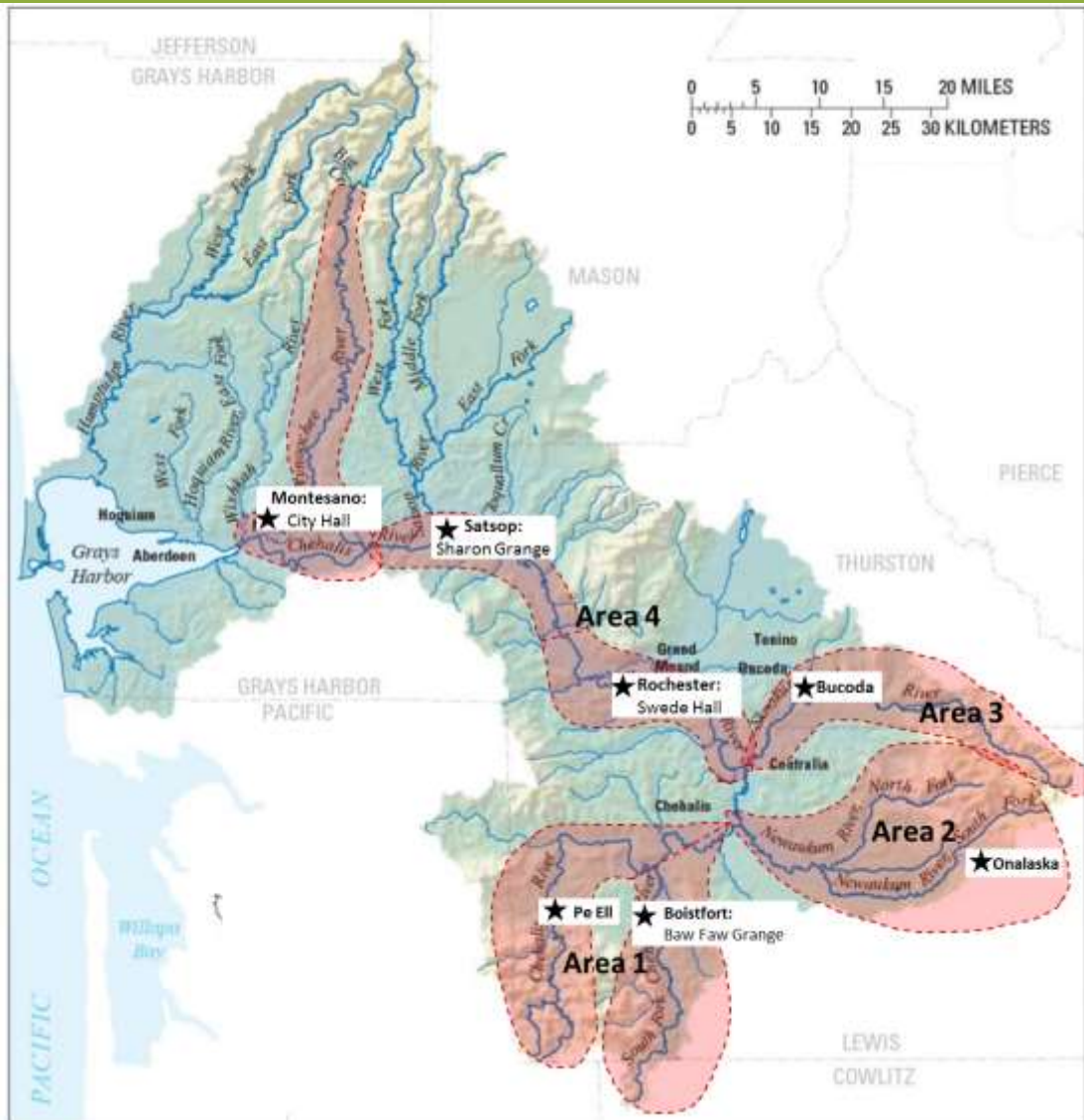
- Learn from the community
- Inform and engage the community about the PEIS
- Broaden awareness of the ideas in the Chehalis Basin Strategy (CBS)
- Use community input to shape the CBS
- Measure willingness to participate in actions in the CBS
- Provide meaningful input to Governor to inform recommendation

Learning from the community

- Focus groups
 - Habitat restoration
 - Flood proofing
- Interviews with community leaders
- Engagement with others working in the basin on floods & habitat



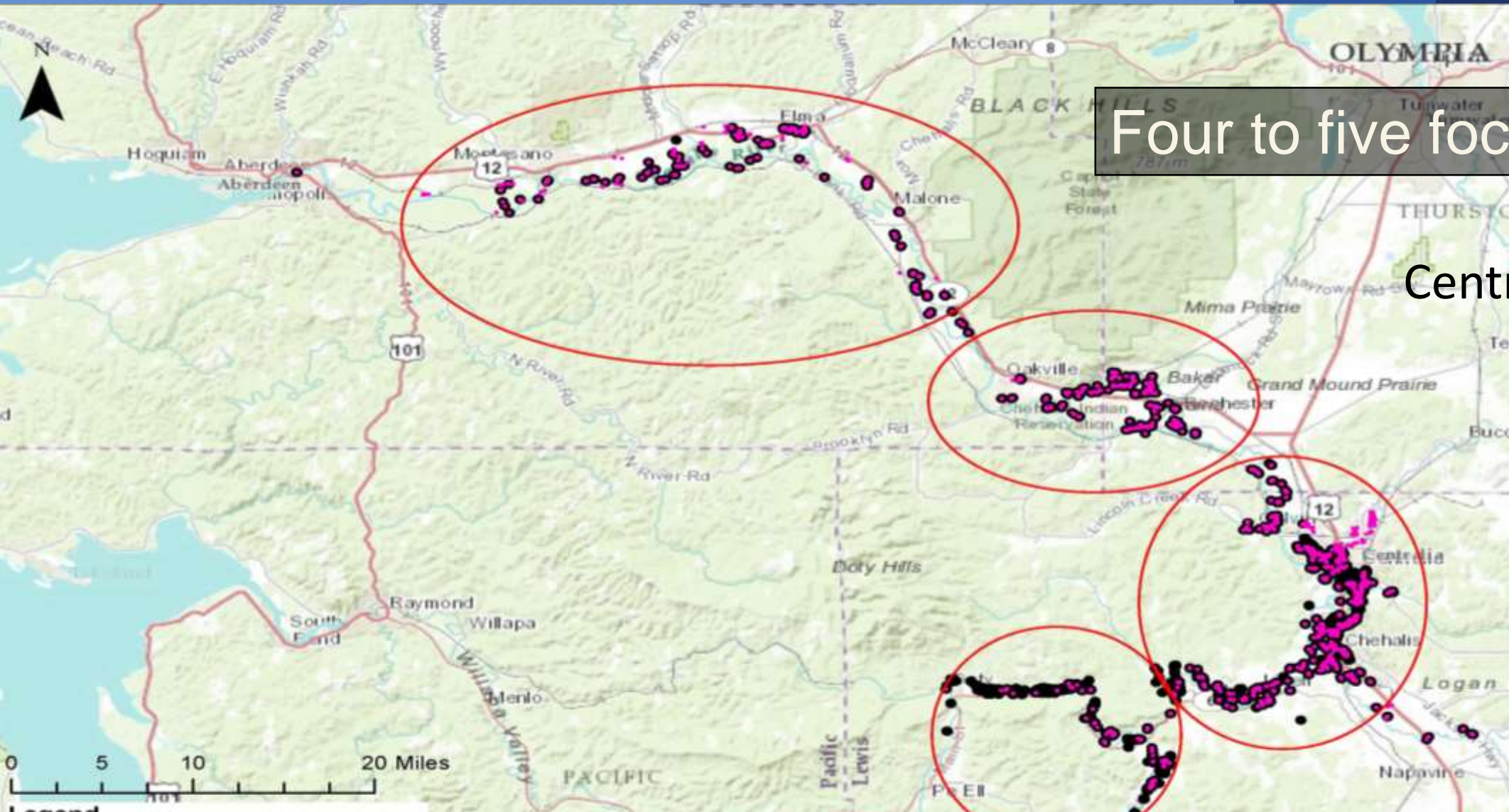
Habitat restoration



Six focus groups

- Montesano - City Hall
- Elma - Timberland Library
- Oakville - Sharon Grange
- Onalaska - tbd
- Pe Ell - City Hall
- Bucoda - Town Hall

Floodproofing



Four to five focus groups

Rural
Centralia/Chehalis
Aberdeen
Commercial

Working with partners



Key messages



Planned activities

- Provide booth at fairs and festivals
- Present to key groups around the basin
- Share information via web, press briefings, etc. as information emerges
- Provide traveling display/video
- Support partners' outreach efforts with materials
- Conduct surveys in the fall

Chehalis Basin Strategy

Thank you!



<http://chehalisbasinstrategy.com>